

LINK

**ALL SAINTS'
HORDLE**

September/October 2025

**ST. ANDREW'S
TIPTOE**

NEWS FROM THE CHURCHES

HORDLE PHARMACY

26 Ashley Lane, Hordle

- Collection of your prescriptions from local surgeries and free deliveries
- Free NHS FLU JABS for eligible people
- Professional advice available

01425 610594

E-mail: hordle.pharmacy@gmail.com

ASHLEY MOTOR REPAIRS

Ashley Crossroads
New Milton BH25 5AQ

General Servicing and Repairs

M.O.T.s, Body Shop

Free Estimates **01425 615989**

The Memorial Hall at Hordle



Both halls available for hire.

Up to 170 people

Contact the Church Office 01425 626565 for details
or email bookings@hordleandtiptoechurch.org.uk

The Church Hall at Tiptoe



The Churches of All Saints', Hordle and St Andrew's, Tiptoe

All Saints' Church
Hordle Lane
Hordle
SO41 0FB



St. Andrew's Church
Sway Road
Tiptoe
SO41 6FR



- We Worship God in Spirit and Truth
- We Grow in Faith and Fellowship
- We Reach out with the Gospel

Sunday Services

HORDLE

9.00am Morning Prayer - 1st Sunday

9.00am Holy Communion - 3rd Sunday

10.30am Family Communion / Family Worship / All age Worship

6.00pm Contemporary Worship - 2nd and 4th Sundays

Please note: Hordle service pattern and times are changing in October -
see **All Saints Services Update** article in this edition.

TIPTOE

10.00am Morning Prayer - 1st and 3rd Sundays

10.00am Holy Communion - 2nd and 4th Sundays

Church website - www.hordleandtiptoechurch.org.uk

ENQUIRIES

For all enquiries, please in the first instance contact the Church Office

Tel: 01425 626565

Or email: church.office@hordleandtiptoechurch.org.uk

EVERTON NURSERIES GARDEN CENTRE

The New Forest's Leading Garden Centre. A wonderful selection of Trees, Shrubs, Houseplants, Garden Sundries, Tools and Furniture.

CAMELLIA'S RESTAURANT

Morning coffee, afternoon tea, lunches prepared fresh every day.

EVERTON (on A337 near LYMINGTON), LYMINGTON, HANTS. SO41 0JZ

Telephone: 01590 642155 Fax: 01590 644710

www.evertonnurseries.co.uk E-mail: sales@evertonnurseries.co.uk

OPEN EVERY DAY - MON-SAT: 9.00-5.30 SUN: 10.30-4.30

www.abreelectrical.co.uk

mb1:07821 973065

16 Keyhaven Road, Milford on Sea, Hampshire SO41 0QY

abre|electrical
benjamin renouf

**Specialists in Fault Finding, Consumer Unit Upgrade, Lighting
Immersion Heaters & Boiler Heating Controls**

Landlord Electrical Certificates & Electrical Installation Condition Reports

All aspects of Electrical Work undertaken

All work to 17th Edition & Part P Compliant, Guaranteed & Insured

National Association of Professional Inspectors & Testers Membership No.: 15685

Call Benjamin on 07821 973065 for a FREE Quotation

A life well
remembered
lives on.



Diamond & Son *Funeral Directors*

A funeral is a time to say goodbye and to remember the life of a person you love. It's our privilege to be at your side.

We have been funeral directors for generations and when someone you love dies, you can depend on us. We're honoured to be the people you can turn to, even at the hardest of times.

You can talk to us any time, day or night or for further information visit us at

www.diamondandsonfunerals.co.uk

**Diamond & Son
Holbury**

191-195 Long Lane
Holbury SO45 2PD

023 8089 4124

**Diamond & Son
Lymington**

9 Lower Buckland Road
Lymington SO41 9DN

01590 672060

funeralpartners.co.uk



Funeral Partners

When replying to Advertisers, please mention "LINK"

WELCOME to the September/October issue of LINK

As the Vicar is on holiday, we start with a story! (written by Dai Woolridge)

Right at the start,

The Original Creator

Set out solar systems with stanzas

And from the dust He formed us

As the ultimate reflection of His perfection

Until the cataclysmic mistake

With the snake spoiling the truth and speaking fake news

Knowledge misused and trust abused.

Sin goes viral.

*Yet a seed sown pointing to a promise of a rescuer homegrown. **They wait.***

Abe gets the call –up,

Then Isaac, to Jacob God-wrestler

The providence of God sees Jo go from prisoner to prime minister

400 years pass

Then a 10 plague standoff - Israel's shackles come free

Moses leads the way, as God centre-parts the seas!

To Sinai -

A 10 part moral compass,

12 eye spies

*40 years in the wilderness - **They wait***

Moses to Joshua - the baton gets passed

Promised Land with milk and honey on tap

Judges lead, then it all falls apart

People want a King, on paper Saul's mustard but he wrecks the gig

Psalm-singer David gets crowned then convicted

Temple gets built but Solomon's conflicted

Kingdom divides, God's people get evicted

Daniel naps in a lion's den

70 years pass - God brings them back!

Then, Temple ruins get erected, a wall gets built - Jerusalem's protected

And they wait

Find the full poem -

'The Bible in four minutes' in *Six beats One Story* at biblesociety.org.uk/biblein4

Watch 'The Bible in Four minutes' animation at biblesociety.org.uk/BuySixBeats



Sunday Services September 2025

All Saints', Hordle

Sunday	7th	9.00	Morning Prayer
		10.30	Family Communion - Hall
Sunday	14th	10.30	Family Worship
		6.00	Contemporary Worship
Sunday	21st	9.00	Holy Communion
		10.30	All Age Harvest Festival - Hall
Sunday	28th	10.30	Family Worship
		6.00	Contemporary Worship - Hall

St. Andrew's, Tiptoe

Sunday	7th	10.00	Morning Prayer
Sunday	14th	10.00	Harvest and Holy Communion
Sunday	21st	10.00	Morning Prayer
Sunday	28th	10.00	Holy Communion

Sunday Services October 2025

All Saints', Hordle

Sunday	5th	9.30	Morning Prayer
		10.30	Family Communion - Hall
Sunday	12th	9.30	Morning Prayer
		10.30	Family Worship - Hall
		6.00	Contemporary Worship - Hall
Sunday	19th	9.30	Holy Communion
		10.30	All Age Worship - Hall
Sunday	26th	9.30	Morning Prayer
		10.30	Family Worship - Hall
		6.00	Contemporary Worship - Hall

St. Andrew's, Tiptoe

Sunday	5th	10.00	Morning Prayer
Sunday	12th	10.00	Holy Communion
Sunday	19th	10.00	Morning Prayer
Sunday	26th	10.00	Holy Communion

Calendar for September 2025

Coffee	12th, 26th	Sept	10.30	Redcliffe
Luncheon Club	not in	Sept		
Tea@3	not in	Sept		
Rooted	21st	Sept	5.30	Memorial Hall
Fun and Fellowship	9th	Sept	2.30	St Andrew's Hall
Voyagers	9th,16th,23rd,30th	Sept	7.00	Upper Room
Quiet Garden	18th	Sept	9.50	Rodgers
Little Angels	16th,23rd,30th	Sept	9.30	Memorial Hall
Bell Ringing	2nd,9th,16th,23rd,30th	Sept	7.00	Bell Tower, Hordle
Neon Sounds	8th, 15th, 22nd, 29th	Sept	7.30	Memorial Hall
Carers' Friends	17th	Sept	1.30	Memorial Hall
Explorers restarts	7th	Sept		

Calendar for October 2025

Coffee	10th, 24th	Oct	10.30	Redcliffe
Luncheon Club	2nd	Oct	12.30	Memorial Hall
Tea @3	16th	Oct	3.00	Memorial Hall
Rooted	19th	Oct	5.30	Memorial Hall
Fun and Fellowship	14th	Oct	2.30	St Andrew's Hall
Voyagers	7th, 14th, 21st	Oct	7.00	Memorial Hall
Quiet Garden	16th	Oct	9.50	Rodgers garden
Little Angels	7th, 14th, 21st	Oct	9.30	Memorial Hall
Bell Ringing	7th,14th,21st,28th	Oct	7.00	Bell Tower Hordle
Neon Sounds	6th,13th,20th27th	Oct	7.30	Memorial Hall
Carers' Friends	15th	Oct	1.30	Memorial Hall

Prayer meetings in September

Mondays	1st	Sept	11.00	Memorial Hall
	8th, 15th, 22nd, 29th	Sept	11.00	Zoom P.M.

Prayer Meetings in October

Mondays	6th	Oct	11.00	Memorial Hall
	13th, 20th, 27th	Oct	11.00	Zoom P.M.

Registers for July and August

Interment of Ashes : Marie-Anne King

David McEachran

Funeral : Iain Stocker

Lynne Dibble

John Boyne

Wedding : Sarah Wood and George East

Andrew Ollie and Zersheen Nazim

Old words ... but surely still valid!

Do all the good you can

By all the means you can

In all the ways you can

In all the places you can

To all the people you can

As long as ever you can

John Wesley (1703 - 1791)

In July, Revd Phil set out changes which will be made in October. There follows a shortened form of his letter:

All Saints Services Update



In July's PCC meeting, two significant and exciting decisions about services at All Saints' were made.

The first decision is to make permanent our current evening service on 2nd and 4th Sundays in the Memorial Hall. The PCC recognises it offers something different from all our other services, especially to teens and younger adults, and it has an established regular congregation. It is well worth keeping and developing further.

The second decision relates to the two morning services at All Saints'. Starting in October, we will be making the 9am service weekly, moving it to the new time of 9.30 am, while the 10.30 am service moves into the Memorial Hall every week. This pattern will run for an initial six months, until the end of March, and will be reviewed by PCC in early 2026.

A Service Review Group has aimed to discern how we can ensure that our services enable us to fulfil our church's vision to welcome all ages, particularly seeking to better reach children and young adults. We have sought to find ways to do this.

People aren't numbers, however, and there will no doubt be some who find this change hard. If that's you, please do get in touch with me; I'd love to hear what you have to say.

The PCC is aiming to provide as many people as possible with somewhere they can feel happy to worship in the parish, particularly by allowing some who may have found 9am too early to consider worshipping at 9.30am.

We also hope to fulfil both aspects of the Service Review Group's brief – to reach younger generations and enhance all our services – by improving the appeal of the 10.30am service for families, whilst also reinstating weekly earlier services.

I am excited about the steps we are taking and I hope you are too.

It has been a busy summer ...

LEE ABBEY

On 11th July, twenty two members of our congregations from All Saints' and St. Andrew's attended the "Renew, Refresh and Resource" weekend at Lee Abbey on the North Devon coast near Lynton.

Lee Abbey was built in the early 1840's. It is a Gothic-styled splendour of a house with wonderful views out to the hilly coast. After WW2, the house was bought by six men who determined to create a centre where Christian people could encounter Jesus and be encouraged in their faith. Their vision has borne fruit ever since.

Angie and Clive arranged this trip and most were pleased to have mini-bus transport to and from the Abbey.

The weekend began early Friday evening. Meals are taken together and are served by volunteers from all over the world who stay and work at the Abbey.

Saturday started with prayers. After breakfast there was a course led by Jim Moyler called "Living and Telling". He took us through a process where we questioned ourselves to see if we were sharing our Faith with others as we should. If not, how could we do better? Many found this insightful.



After lunch, there was free time to explore. Some went walking. Others rested from the heat (yes, an actual British heatwave!!) Some were kindly driven by Clive down to the beach. Surprisingly, considering its secluded locality, it was full of people enjoying the sand and sea. Some of us climbed, very carefully, over rocks to the sea and paddled. Angie and Debbie went swimming!

Saturday evening there was a Barn Dance. Shame it was really too hot for many to join in.

On Sunday, there was a service of Communion, prayer and song followed by lunch. Then the journey home.

Lee Abbey was a great opportunity for everyone to get to know each other much better. That weekend our two churches were one!

Joan Lane

(See also this month's cover picture, taken by Tony Barker, of the view from the Abbey grounds to the sea.)

Fun and Fellowship

Our meeting in July was a beautiful day, so we all sat outside in the shade. We had a fun quiz followed by a cream tea outside and I don't think we were bothered by wasps wanting to share the jam!

We welcome anyone who would like to join us on the second Tuesday of the month, starting at 2.30pm. People arrive anytime from 2 o'clock.



**Our next meeting is
September 9th in St
Andrew's Hall**

Fun and Fellowship Cream Tea

More summer activities ...

Parish Barbecue

This was our largest BBQ yet!! It was a beautiful day, warm and not too sunny when about 80 folk gathered in the Tiptoe Church Hall gardens for a BBQ.



Alan and Allen did the cooking on the BBQs and we thank them for that. Nothing was cooked in the oven this time as the range had been declared dangerous! After the main course, ice creams were served, making a welcome treat! As it was such a warm day, helpers were very busy refilling the drink jugs.

It was a very enjoyable occasion for the parish and hopefully will be repeated in future years. A big thank you to everyone who helped in food preparation and on the day.

Janice and Chris

A comment was overheard: 'We should do this every month!' It was a lovely occasion, but also a huge amount of work (spearheaded by Janice and Chris) - so not every month! Thank you so much Bensons. Ed.

Another academic year completed with Open the Book at Tiptoe School.

On our last visit all the team who could come were helping with our story and about 10 children too. The story was Jesus and the children. Afterwards the children who were leaving at the end of the term were presented with a book entitled "Diary Disciple" from the church family. We look forward to returning to the school in September.

Janice B



Open the Book



How much do you know about Open the Book, except that it is regularly featured in LINK to highlight the wonderful work being done by our Tiptoe team?

Well here are some facts!

7,500 Open the Book storytelling volunteers

2,500 storytelling teams

3,000 primary schools being visited

360,000 students are regularly hearing Bible stories

Open the Book is also growing in another 18 countries spread across Africa, Latin America and the Middle East, all thanks to the kind giving of Bible Society supporters.

In 1999 Dave Todd recognised that most children were not familiar with Bible stories, and he longed to change that. He wanted to bring Bible stories to life for children in a way that was creative, engaging, interactive and fun. He wanted Bible to be hungrily opened.

So, he assembled a small group of Christians in his lounge, unveiled a giant cutout of a lion that he had made, and asked, 'How are we going to tell the story of Daniel in the lion's den?' Open the Book, as it came to be known, was born and it grew.

So, Bible Society says thank you ...

'In the past year, thanks to your support, we've produced more than 90 Bible studies to go with the stories (these are aimed for Storytellers, but have also been run for groups of interested parents.) We've commissioned eight new stories and are planning on a new refresher training course and resources to support Storytellers to use the material in different contexts such as special needs school or infant classes. Your kind giving enables all of this. Thank you!'

What's Upcoming for this Autumn?

Parish Picnic

Sunday 31st August

Vicarage Garden, Hordle

12.30pm

**Bring your own food and
chairs or blankets**

Harvest services

**Sunday 14th September at
Tiptoe 10am**

**Sunday 21st
September at
All Saints' Hall
10.30am**



Men's Breakfast

**Saturday 27th September in
Memorial Hall**

8.30am Cost £5

Speakers:

Stephen and Jinsuk Wall

Subject:

Holidays with a difference



Light Party

31st October

5 - 7 pm

**Further details available
nearer the time**

Big Church Read

**Details coming
soon**



Happy Birthday to Ilse Ritchie at the end of September, when she will reach a milestone birthday - and thanks for all she continues to do in both our churches.



Little known Bible Characters

Gill Morris has been looking at some of the more 'minor' characters in the Bible. Have you heard of all of them?

1. Phoebe

With all the current discussion and speculation as to whether the next Archbishop of Canterbury could be a woman, who better to start our series of little known Bible characters than Phoebe?

Those who have seen the video that Andrew Ollerton made to accompany his study of Paul's letter to Romans, will remember seeing Phoebe at the beginning of each study carrying a scroll to the Christians in Rome who were meeting in their House Groups.

Phoebe is only mentioned once in the Bible at the end of Romans where Paul writes. *"I commend to you our sister Phoebe, a deacon of the church in Cenchrea. I ask you to receive her in the Lord in a way worthy of His people and to give her any help she may need from you; for she has been the benefactor of many people, including me"* (Romans 16:1-2)

We know Paul wrote this letter while living in Corinth and it could be that he entrusted this precious Epistle to Phoebe to deliver to the church in Rome.

Phoebe lived in Cenchra, a dockside town in the port of Corinth. She is described as being a deacon or servant of the church there. Paul refers to her as a sister (in the spiritual family of the Lord) so suggests she enjoyed the same privileges and responsibilities as the men leading the church.

She was obviously a wealthy lady as she supported Paul's ministry financially and shared her wealth with others as well.

Paul was a pioneer in the recognition of the function of women in Christian service and demonstrates the important role they played in the early church.

Let us follow Phoebe's example in supporting our Ministers and serving others in whatever ways we can.





Year 6 Vicarage Picnic



Last week, our Year 6 children enjoyed a special picnic at the vicarage to mark the end of their time at primary school. It was a joyful occasion filled with laughter, reflection, and prayer as they looked back on their journey and looked ahead to the next exciting chapter. As a thoughtful gesture, the church gifted each child a copy of *Diary of a Disciple* to support and inspire them as they move on to secondary school. It was a memorable way to say farewell and remind them that they go forward with faith, encouragement, and a strong sense of teamship.



Global Citizens of Hordle Primary

At Hordle CE Primary School and Nursery, we are proud to develop a strong sense of courageous advocacy with our pupils throughout their learning journey. We are delighted to share that over this past academic year, Team Hordle raised a total of **£2,388.81** for charity. A breakdown of totals raised by our

Team Hordle global citizens are as follows:

WHOLE SCHOOL RAISED £359.07 FOR CHILDREN IN NEED 	WHOLE SCHOOL EARTH DAY RAISED £170.12 FOR EARTH DAY 	WHOLE SCHOOL Royal British Legion RAISED £185.44 FOR THE POPPY APPEAL 	WHOLE SCHOOL WE ARE MACMILLAN. CANCER SUPPORT RAISED £312.00 FOR MACMILLAN 	HORDLE EXPLORERS NURSERY RAISED £274.25 FOR ELSIE'S ROSE
FOUNDATION STAGE RSPCA RAISED £101.50 FOR RSPCA 	BADGERS NEW FOREST TRUST RAISED £28.50 FOR THE NEW FOREST TRUST 	HEDGEHOG ORANGUTAN FOUNDATION RAISED £28.50 FOR THE ORANGUTAN FOUNDATION 	SQUIRRELS SURFERS AGAINST SEWAGE RAISED £28.50 FOR SURFERS AGAINST SEWAGE 	HAZEL THE SHOE THAT GROWS RAISED £79.00 FOR THE SHOE THAT GROWS
ASH The Silver Line RAISED £128.45 FOR THE SILVER LINE (AGE UK) 	OAK MAF RAISED £95.10 FOR MAF FLYING FOR LIFE 	WILVERLEY CANCER RESEARCH UK RAISED £314.83 FOR CANCER RESEARCH UK 	DEERLEAP DIABETES UK RAISED £302.96 FOR DIABETES UK 	HAWK HILL coeliac uk RAISED £548.46 FOR COELIAC UK



HORDLE EXPLORERS

The Nest: 2-3 years | The Wild: 3-4 years

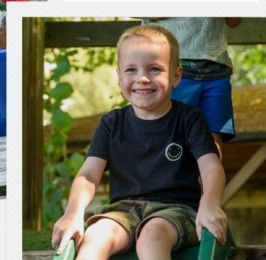
Nursery

Now taking applications for
2025/26, 2026/27 and beyond!

For children born from 1st September 2023 onwards

“Leaders, governors and staff provide an exceptional quality of education for all pupils.”

- Ofsted 2022



Nursery Tours

Come and check us out for yourself by joining one of our Nursery tours!

Upcoming tour dates:

- Monday 29th September 2025, 2pm
- Thursday 6th November 2025, 2pm
- Wednesday 21st January 2026, 2pm

Our address:

Hordle Explorers Nursery,
Hordle Lane,
Hordle,
SO41 0FB

Contact us:

- ☎ 01425 611657
- ✉ hen@hordleprimary.co.uk
- 📱 @hordleexplorersnursery

Scan me!

Scan the QR code to find out more about Hordle Explorers, apply for a place or book a nursery tour!



Shoeboxes Appeal

It's that time of year again when we think of giving children in Third World countries a little joy at Christmas by filling a shoebox for them.



I know that some people find it hard filling a box so this year there will be containers left in both churches for donations from the end of September and I will fill boxes.

I know there are hats, scarves and gloves already waiting to be donated.

Items needed are: toys, games, stationery items, toiletries, soap, toothbrushes, flannels.

Milford Gift shop stocks things specially for these shoe boxes. Or if you would rather donate money that would be very helpful.

If you would like to do your own box then please do.

All contributions gratefully received.

Gill Morris



We have seen over 20,000 children this academic year either on retreat at Wintershall or in their schools or our productions. 20,000 people attended our Trafalgar Square production with the livestreams being viewed by approximately 123,000 across the world. We had 75 schools at the Life of Christ this summer with almost 5,000 people attending overall. It's some of their first steps on their journey of faith in this difficult world to understanding God's love for them.



Photo: Wintershall

Dates for your diary :

The Nativity Journey	16-21 December 2025	<u>Book now</u>
The Passion of Jesus	3 April 2026	
Life of Christ	16-20 June 2026	

THOUGHTS FROM MY GARDEN

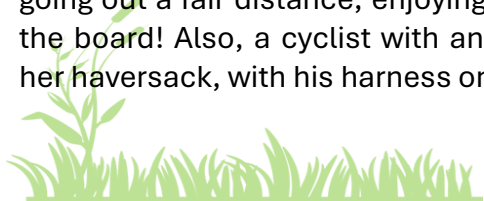
I do not think I have seen my garden as dry as it is. No grass cutting is needed; only a tidy up to cut the seed heads off. I am concentrating on the vegetables which will feed us during the winter and next spring. The purple sprouting, brussels sprouts and kale all have covers on to prevent the cabbage white butterflies from laying their eggs on the leaves, with the resulting caterpillars feeding on the leaves. The chard and spinach are left alone.

The butternut squash plants are doing well; we will have a good crop this year. With their tough skins, they keep well and will make my favourite soup!

I watch the sparrows as I eat my porridge. As soon as I fill the fat ball holder, they come, with the bossiest one on the top pecking any intruders who come too near. There are usually 6-8 feeding, with more waiting their turn.

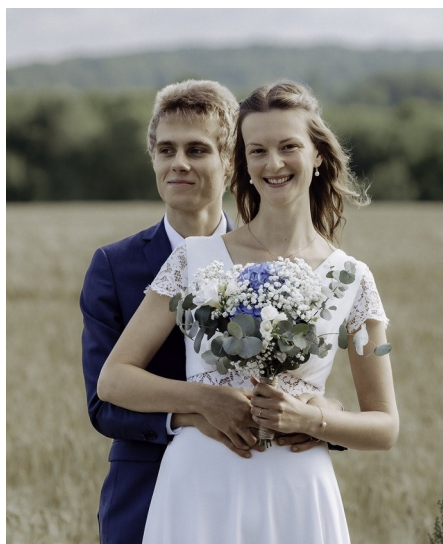
Seen recently – a paddle boarder with a very excited terrier, on the sea going out a fair distance, enjoying themselves. The dog was attached to the board! Also, a cyclist with another happy little dog sat in the top of her haversack, with his harness on, and his paws on her shoulders!

Enjoy the weather while it lasts!



A Summer Wedding ...

*Hannah (daughter of Timothy and Judith Rice) and Simon Marionnet
Married in France, June 2025
Wishing them every happiness!*



Preparing Gardens for Winter

Resist the temptation to clear up everywhere - leave an area unkempt to grow naturally, encouraging grasses, wildflowers to provide home for over-wintering insects and invertebrates.



Create a log and leaf pile for hibernating hedgehogs and other mammals and a place for them to build their nests in early Spring.

Add a 12-15cm hole to the bottom of your fence or gate, so hedgehogs can crawl through.

Leave flower seed heads on for food for birds.

Clean bird tables and feeders regularly and thoroughly. **Fill bird feeders** regularly.

Enjoy looking online for plants to put in your garden next year which are drought resistant and attract pollinators which were badly affected by drought this summer.

(See July/Aug copy of LINK 'Plant for Pollinators')

Eco Church

Please can YOU help with **THE BIG STRIM & BIG RAKE**



In our churchyards from 9.30am ...

St Andrew's Tiptoe: Strim on Tuesday 2nd September
 Rake on Tuesday 9th September

All Saints' Hordle: Strim on Tuesday 16th September
 Rake on Tuesday 25th September

Please bring/borrow a Strimmer, and bring your own rake.
Refreshments will be provided.

CHURCHYARDS ARE VITAL HAVENS FOR WILDLIFE



There was SO MUCH to see
in All Saints' churchyard!

1 beautiful Dawn Redwood

7 friendly helpers

8 excited children

11 different garden birds

15 curious grownups

18 species of insects

21 varieties of grass and
wildflowers

36 lively butterflies from 11
species, with results
submitted to THE BIG
BUTTERFLY COUNT.

Everyone enjoyed the
event, craft & Sophie's
cakes. Be sure to join
us next year!



Cinnabar Moth
Caterpillar



Granny, can we be the
last to leave?



NATURE DISCOVERY DAY 19/07/25



Hordle and Yerville Twinning Exchange

Another successful Twinning Exchange was held between the residents of Hordle and Yerville (Normandy) in mid-July. 26 adults and 5 children travelled from Yerville by coach, arriving on Friday evening to be welcomed by a reception organised by Hordle Parish Council, at the Pavilion. Council Chair, Cllr. Maggie Hill, gave a welcoming address in French, before the visitors left with their hosts for supper.

With glorious weather on the Saturday, hosts showed their French guests the lovely local countryside and coast, including Keyhaven, Hurst Castle, Lymington, Beaulieu and Bucklers Hard. The day ended with a Soiree at All Saints Church Hall, with a bilingual pub quiz and fish and chip supper.

The sun shone again on Sunday for the group visit to Highcliffe Castle. Everyone enjoyed a guided tour of the Castle which stressed the strong connection between the Castle and key buildings around Rouen, Normandy, where most of the decorative stone and the fantastic stained glass “Jesse Window” came from. As one of the Yervillais commented, “A grand Norman chateau, which happens to be in England”.

With a picnic in the Castle grounds, followed by a short trip to the beach for a swim, everyone had a fantastic day, with many then teaming up to have a convivial evening meal together, lasting late into the night.

We celebrated Bastille Day with our guests on the Monday morning, with time for a full English breakfast and short stroll in the New Forest, before the Yerville coach left for Newhaven. All in all, a great weekend together.

Next year, Hordle residents will travel to Yerville, for the reciprocal twin exchange visit, marking 38 years of friendship between the two villages.

For more details about Hordle & Yerville Twinning, please contact Bob on 07436 000614



Help hospice care live on

Could you pledge a gift in your will to ensure Oakhaven Hospice is here to care for and support local families in the future?

Oakhaven is at the heart of our community, each year providing compassionate care for thousands of patients and specialist support for their loved ones. Oakhaven is here for everyone in the New Forest, Totton and Waterside, from the diagnosis of a life-limiting condition to being there for loved ones in bereavement.

For many of us, a hospice will touch our lives, whether for ourselves, a loved one, or a friend, providing comfort, dignity, and expert care through life's most challenging times. But this support wouldn't exist without you. Oakhaven relies heavily on charitable donations to keep its doors open.

A gift of any size will help to ensure Oakhaven is here to help people you love receive end-of-life care.

Hospice care is free at the point of use. But, unlike the NHS, it is not fully state-funded. Currently, just 11% of Oakhaven's annual running costs are covered by the government. With rising costs and growing demand for hospice services, these gifts are more important to us than ever.

A gift in your will can help make sure Oakhaven will be here to offer compassionate, free care to thousands of people each year, now and in the future.

To find out more about leaving Oakhaven a gift in your will, visit oakhavenhospice.co.uk/legacy, or call 01590 677773.



**THIS IS
HOSPICE
CARE** 

It's easing pain and bringing comfort, caring for those dying and for those around them.

Help hospice care live on for all, for now, forever.

Leave a Gift in your Will
oakhavenhospice.co.uk/legacy

 **Oakhaven**
hospice

making every moment matter
New Forest . Totton . Waterside

    [@oakhavenhospice](https://oakhavenhospice.co.uk)

 Registered with
THE CHARITY
COMMISSION
REGULATOR

Charity Registration
No. 900215 (England & Wales)

HORDLE VILLAGE ACTIVITIES

Hordle W.I. meets on first Tuesdays at 2pm in the W.I. Hall, Ashley Lane, Hordle.

Contact: Yvonne **01425 615284** www.hordlewi.org.uk

Hordle Gardening Club meets on Fridays at 7.30pm in the Pavilion, Ashley Lane, Hordle. Contact: Secretary, Sue Winter, **01425 610171**

Hordle Flower Club meets 2nd Wednesday in the month at The Pavilion, Vaggs Lane. 7pm for 7.30pm. Contact: Denise Gibb **01590 642804**

Hordle Volunteer Driver Group (previously known as Hordle Voluntary Care Group) provides transport for people in Tiptoe, Hordle and Everton to medical appointments when they cannot use public transport. We can also take relatives to visit patients in hospital. We would welcome enquiries from anyone who can spare a few hours to help us support our clients. Please contact our Coordinator on **0345 388 9063** for more information about volunteering, if you need transport to an appointment or you can email: hordledrivergroup@gmail.com.

Please note that our telephone number has changed from 0845 to 0345

Dial-A-Ride provides a door to door shopping service for people who find it difficult to use the bus service. Lymington on Tuesday and New Milton on Friday. To book the service, ring **0845 602 4326** (local call).

TIPTOE VILLAGE ACTIVITIES

SCARF Youth Club, 6.30-8.00 for children with special needs aged 11-16. Contact: Lucinda, 07874 221249

Young Farmers' Club, Tiptoe Contact: brock.hantsyfc@gmail.com

Tiptoe Community Coffee Morning 10am - 11.30am on Wednesdays at Tiptoe Young Farmers' Hall.



To advertise in LINK
please contact the
Church Office



in Everton, Hordle and Tiptoe

We provide volunteer drivers to take local residents to medical appointments, surgeries and hospitals etc.

- ⊗ You decide when you are available
- ⊗ We pay you 50p per mile
- ⊗ We provide personal liability insurance
- ⊗ We cover car insurance excess and no claims discount

For more information contact Ian on **07980 268318**
or email: **hordledrivergroup@gmail.com**

If you are unable to make use of this leaflet please pass it to someone who may be able to help

www.hordlevolunteedrivergroup.co.uk



- Drain Unblocking including toilets, baths and basins
- Drain and Sewer Cleaning
- CCTV Drainage Surveys
- Drain Repairs
- Non Dig Repairs (Drain relining)

Call Your Local Drain Specialist

07368295202

Proud members of
Checkatrade.com
Where reputation matters

Jon Dowdeswell FMAAT



Here to deal with all your accounting requirements!

- ACCOUNTS PREPARATION
- COMPLETION AND SUBMISSION OF SELF ASSESSMENT TAX RETURNS
- PREPARATION OF VAT RETURNS
- WAGES AND SALARY PREPARATION

Brinkley, Middle Road, Tiptoe, Lymington. SO41 6FX

Tel: (01590) 681174 Fax: (01590) 681118

E-mail: davisaccountants@btinternet.com

www.davisaccountantsnewforest.co.uk

When replying to Advertisers, please mention "LINK"



Home care

with 100% of any profits
donated to Oakhaven Hospice



Support with the activities of daily life and **companionship** to help combat loneliness and isolation.

From 30-minute 'drop-ins' to multiple daily visits to 24-hour live-in care, we can help you remain independent in the familiar surroundings you know and love, while receiving the support you need.

Our friendly, trained Care Assistants provide a wide range of home care services, tailored to your exact needs and wishes for your day-to-day routine.

Services include personal care; support with medication, meals and fluids; domestic assistance; help accessing your community; and companionship, helping you live life to the fullest.

- ✓ Live-In Care
- ✓ Visiting Care
- ✓ Respite Care
- ✓ Palliative Care
- ✓ Convalescence
- ✓ Companionship



**Get in touch
for a chat and
free assessment**

01590 646 440 – Lymington office

02381 800 505 – Totton office

Or email info@oakhavencare.co.uk

Find out more at OakhavenCare.co.uk



**Throughout the New Forest • Totton • Waterside •
Lymington • New Milton • Romsey and beyond**



VPM VACANT PROPERTY MANAGEMENT

Whether you're going on holiday, own a second home, or a loved one has gone into care, we provide a range of services to give you peace of mind while your property is empty.

Packages starting from £90 per month

MARK STRODE

Phone

07979 531864
01425 501292

Website

www.newforestvpm.co.uk

Email

newforestvpm@gmail.com

Shorefield Country Park



One of the largest & most comprehensively equipped Leisure Clubs in the area

- Spacious air conditioned 55 station gymnasium
- 'Reflections' Spa with 6 treatment rooms featuring Elemis and Jessica products
- New 'Expressions' hair salon
- Banquets, Weddings and Functions for up to 200 guests
- Luxurious holiday homes and forest lodges for sale / hire
- Indoor and outdoor pools, sauna, steam room spa bath
- Ample parking



SHOREFIELD
HEALTH AND FITNESS CLUBS

Telephone

REF: ASC

01590 648335

e-mail: leisure@shorefield.co.uk
www.shorefield.co.uk

Shorefield Country Park, Milford on Sea,
Hants SO41 0LH

When replying to Advertisers, please mention "LINK"

The Parish Church of All Saints, Hordle with the Daughter Church of St. Andrew, Tiptoe

www.hordleandtiptoechurch.org.uk

E-mail: church.office@hordleandtiptoechurch.org.uk

WHO'S WHO

Clergy

Vicar:

Rev Phil Mullins, The Vicarage, Stopples Lane, Hordle. SO41 0HX

vicar@hordleandtiptoechurch.org.uk

07484 348754

Associate Vicar

Rev Simon Hones, Church Cottage, Sway Road, Tiptoe. SO41 6FR

associatevicar@hordleandtiptoechurch.co.uk

01425 563459

Church Office

All Saints' Memorial Hall, Hordle Lane, Hordle, Lymington. SO41 0FB

church.office@hordleandtiptoechurch.org.uk

01425 626565

For enquiries, please in the first instance contact the Church Office.
For Hall Bookings, please email bookings@hordleandtiptoechurch.org.uk

**COPY DATE for the
November 2025
issue of LINK is
October 13th 2025**

All contributions please to

The Editor:

link@hordleandtiptoechurch.org.uk

***We do not charge for this
magazine***

BUT

*if you would like to contribute towards
our costs, which do keep rising, there are
boxes at the back of both churches, or
the Office would be happy to receive
your donations. (Suggested £1 per copy.)*

Thank you

DISCLAIMER

Any view expressed by contributors or advertisers to LINK should not necessarily be taken to reflect the opinions of the Editors or the PCC and we do not hold responsibility for any of the content.